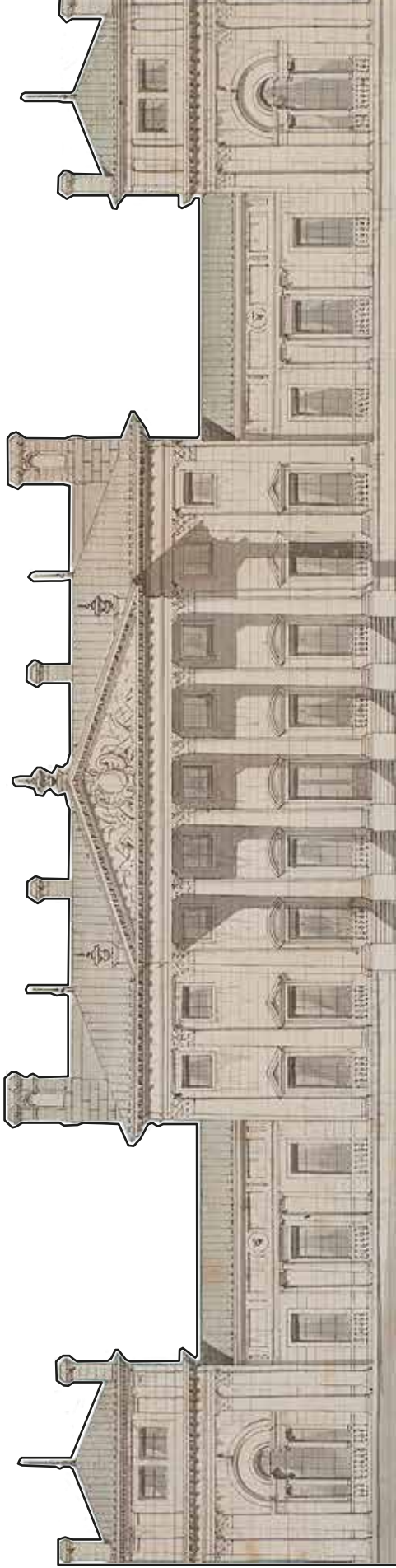


MAKE YOUR OWN HAREWOOD

Cut out all the pieces and stick them together to make your very own Harewood House inspired by Charles Barry's 1843 drawings

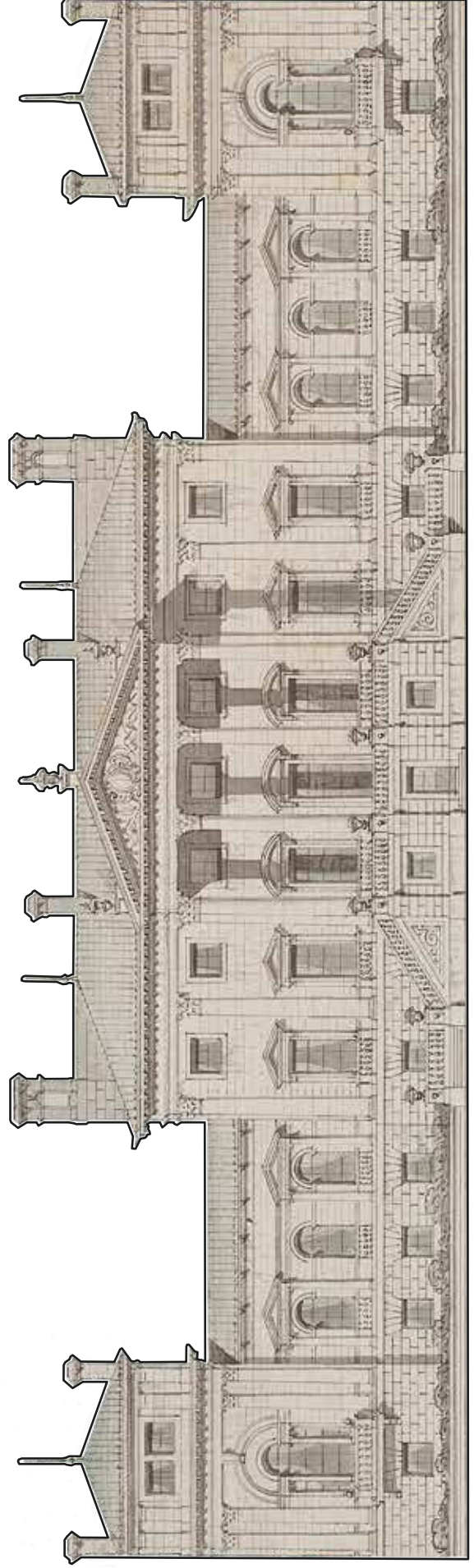


FRONT OF HOUSE



North side of the House (this is where you usually come in through the front door) →

← **South side of the House** (this side of the House looks out onto the Terrace)



BACK OF HOUSE